

YOUNG ACTORS THEATRE

SECOND FLOOR

- 1 Staff & Meeting Room
- 2 CEO's Office
- 3 Toilet

FIRST FLOOR

- 1 Studio 2

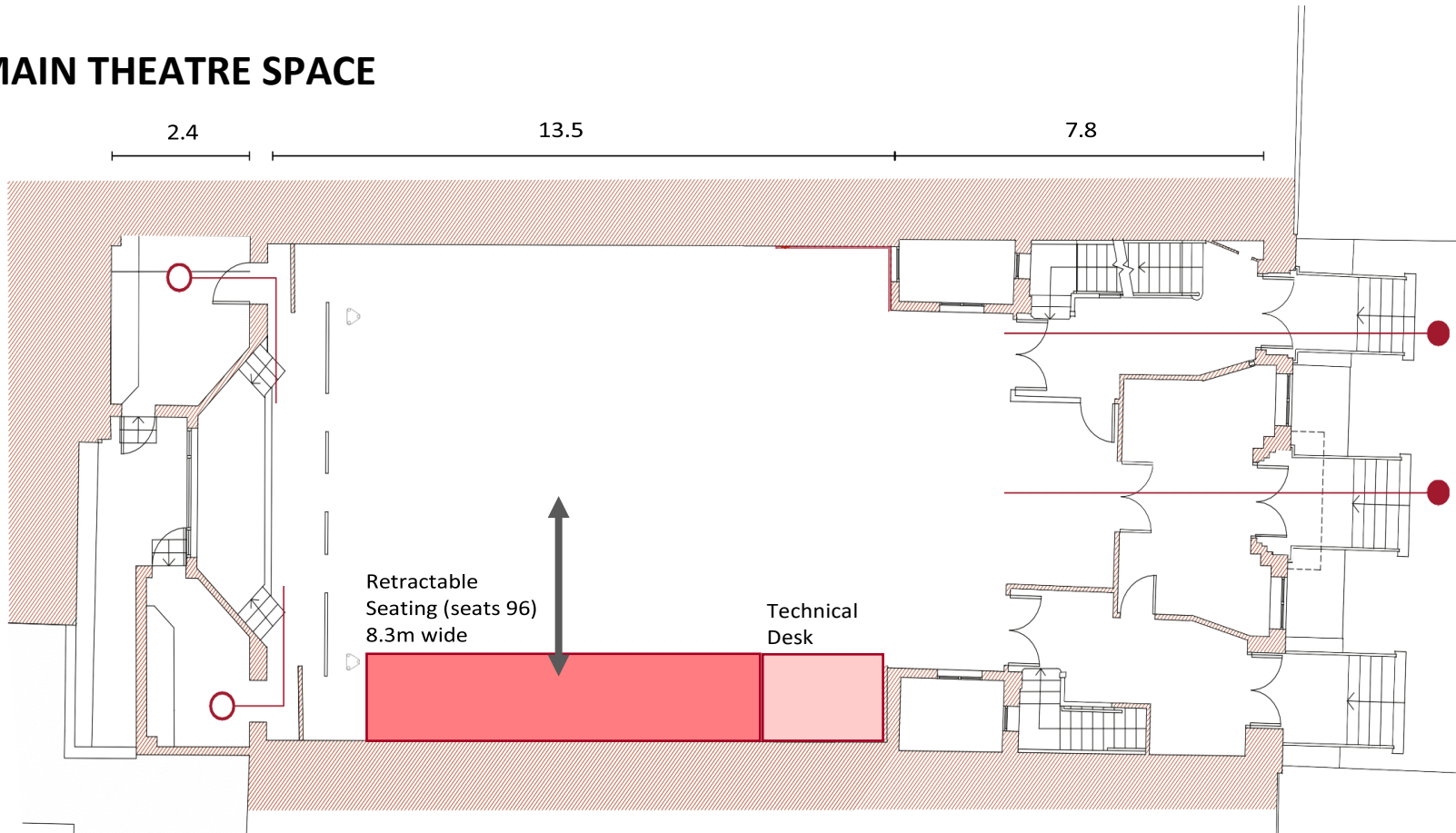
GROUND FLOOR

- 1 Main Entrance Foyer
- 2 Entrance with buzzer system & staircase
- 3 Pre-Theatre Space
- 4 Theatre Space
- 5 Backstage
- 6 Dressing Rooms 1 & 2

BASEMENT

- 1 'Green Room'
- 2 Toilets
- 3 Toilets

MAIN THEATRE SPACE



- Performance space with **seats retracted**, 8.9m (depth) x 9.7m (width)
- Performance space with **seating in place**, 3.4m (depth) x 8.9m (width)
- Rig dimensions, 6.9m (depth) x 8.5m (width) x 3.7m (height)

MAIN THEATRE Info:

This is a **black-box performance space**. There is **cushioned retractable raked seating which seats 96**, and **26 extra chairs** are available subject to maintaining fire regulations. There is a **professional technical desk, fully rigged professional lighting, 2 backstage dressing rooms**, and an **Optoma theatre projector with large screen** available (suitable for film screenings). The performance area is covered by **standard black vinyl floor**, which means no drilling/screwing will be allowed into the stage level. There are also **black wing curtains**.

The hire of this space comes with the **front reception** as well, which will be exclusive to your guests.

Upon hire you will be allocated your **exclusive toilets**.

Lighting

The Main Theatre has a ground support trussing system that sits at 3600mm to the bottom chord.

The truss includes side bars and three bars that are to the rear of the seating, over the front of the seating/front of the performance space and to the rear of the performance space.

The venue has 3 Beta packs providing 18 ways of dimming, patchable to 30 outlets via 6 Socapex connections. Maximum stage lighting load is 60amps. Control is from a Jester 24/48. Additional 15amp Cable is available. The Main Theatre has an independent 30amp ring main.

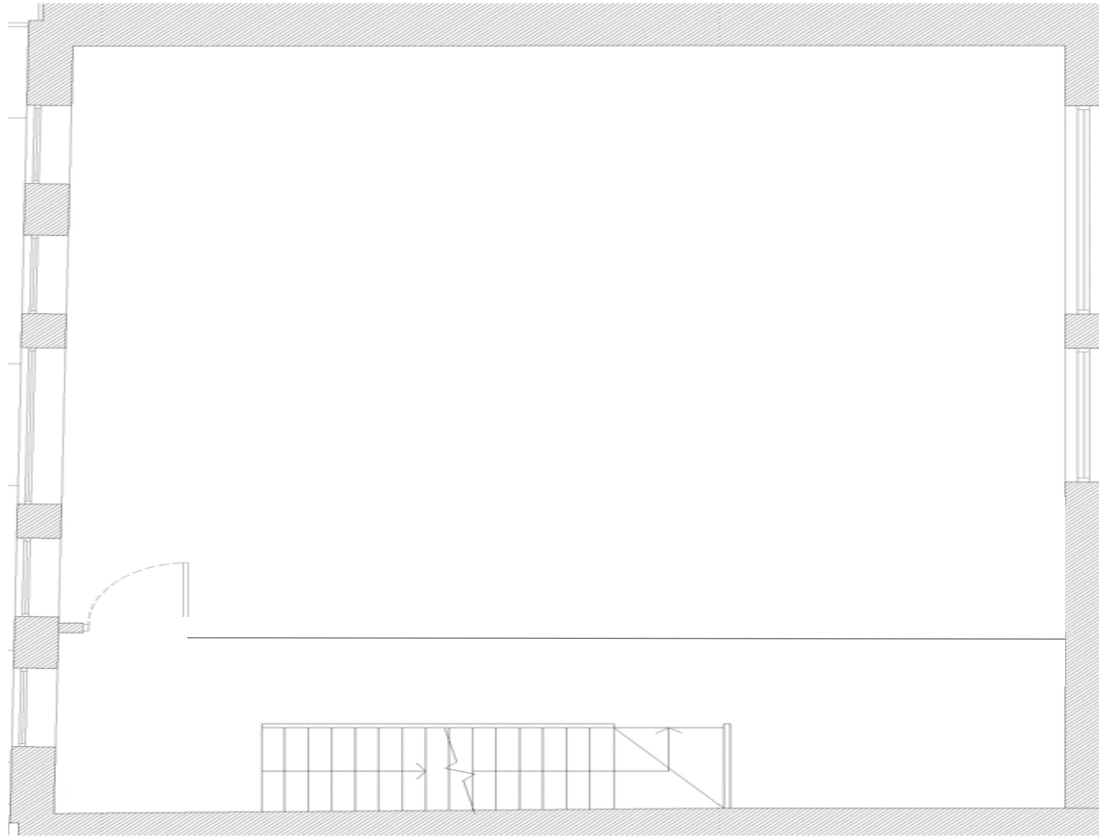
- Source 4 Jr Profile Spot 25/50 - 4
- Selcon Acclaim Fresnel - 6
- Par Can 64 (CP62) - 6

The venue reserves the right to refuse any fixtures that do not meet current PAT regulations.

Sound

- PA with adequate coverage for the space
- Yamaha 16-channel mixer
- 2 x auditorium JBL speakers
- Mini jack input for laptops/iPads/devices
- 2 x wired general purpose microphones

STUDIO 2



- 7.5m (length) x 5m (width)

STUDIO 2 Info:

This is a **dance studio** with a **capacity of 30**. There is **1 mirrored wall** with a **fixed ballet bare** and a **professional sprung vinyl floor**. There is a **6-channel amplifier with wall speakers and Bluetooth facility, LED lighting**, and a **projector with screen** available. We also have a **keyboard** available.

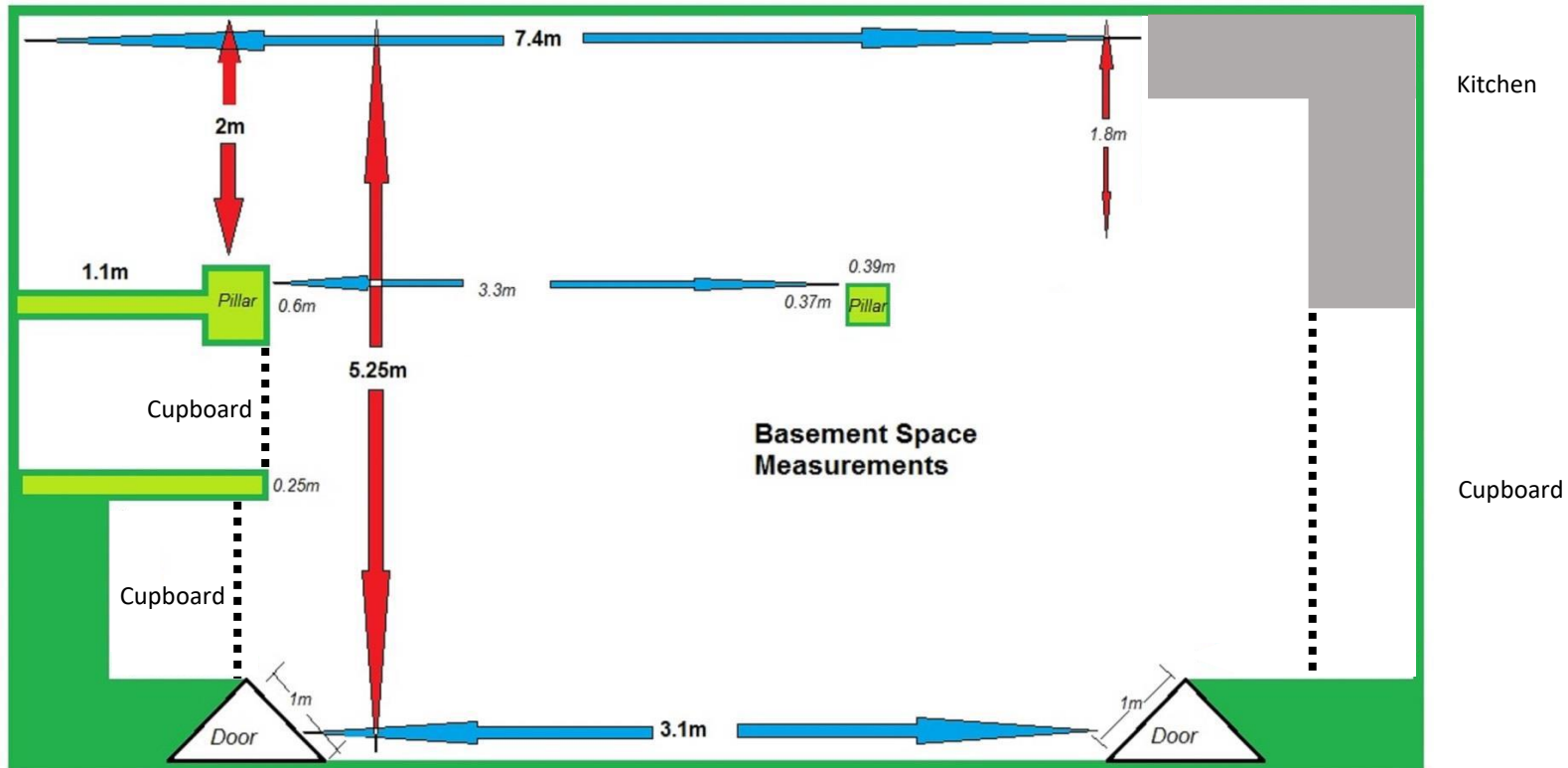
The room receives lots of natural lighting through the large windows, but it can also be made dark using the **black-out curtains**.

Upon hire you will be allocated your **exclusive toilets**.

Lighting

- 2 x LED zoom moving heads
- 4 x LED flat Pars (RGBW with UV)
- 2 x LED RGBW battens
- QTX digital lighting controller, 12 zones with 16 channels, 192 DMX, fully programmable (easily operated once turned on with pre-set zones (1-8) for each LED fixture.

BASEMENT 'THE GREEN ROOM'



- 5m (depth) x 6.5m (width) x 2.2.m (height)

A small space with a **capacity of 15-20** (dependent on use). There is an **equipped kitchenette**, a **large table**, **chairs**, **sofa**, and **projector with HDMI/VGA connection** and **small screen** available. There is a **4-channel amplifier with JBL Control One speakers** and **Bluetooth facility**. The room has **no windows**, and **2 entrances/exits**. Toilets are on this level as well, and upon hire you will be allocated your **exclusive toilets**. There is a **separate entrance to/from the street** to this space.

FIRE ESCAPE ROUTES

SECOND FLOOR

Walk down to the Ground Floor via the staircase and leave via Fire Escape Door 2.

FIRST FLOOR

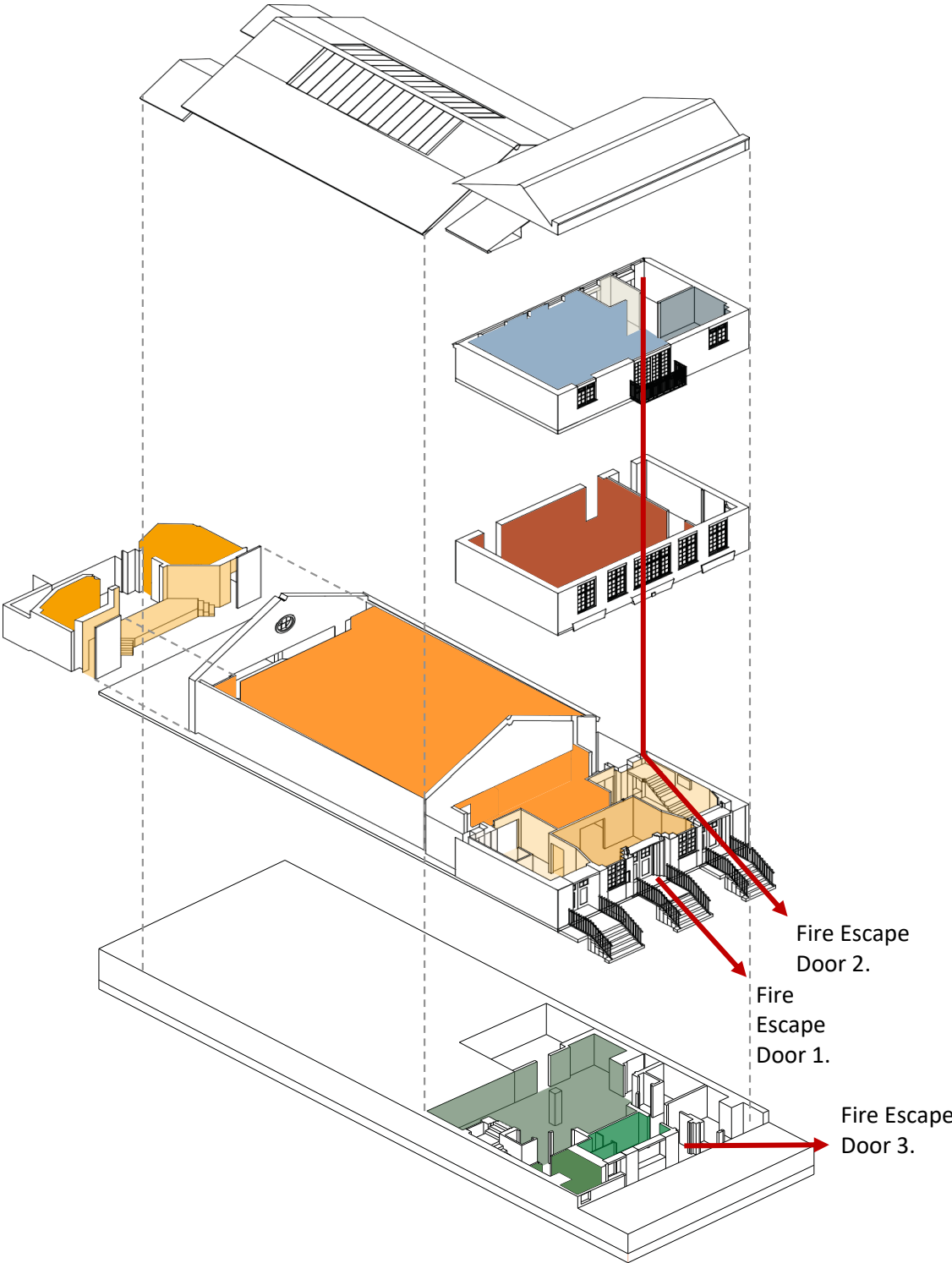
Walk down to the Ground Floor via the staircase and leave via Fire Escape Door 2.

GROUND FLOOR

Leave through Fire Escape Door 1.

BASEMENT

Leave through Fire Escape Door 3.



Health and Safety

The visiting company must provide adequate risk assessments and method statements for dangerous activities related to their show. Access equipment may only be used by people deemed competent by the venue's Duty Technician.

If hiring outside of office hours our caretaker will be hired (£16 per hour). The caretaker is necessary only for health & safety, to look after the building and to lock-up.

Further Information

If you would like to book a hire, please email sarah@yati.org.uk and include the following details:

1. Contact name, email, and phone number
2. Event details (what would you like to use the hire for; how many people will be involved etc.)
3. Desired date(s) and time(s)

To secure your booking please pay:

1. The deposit by the deadline, (see invoice)
2. The final settlement by the deadline, (see invoice)

The deposit will be refunded after check-out on the last day of hire.

You are responsible for any damage to the spaces hired (and equipment if applicable) and will be subject to repair/replacement charges.

Any extra hours which are not pre-authorized will be charged at £100 per hr. Please contact us if you need to make any changes to the above hours, and we will do our best to accommodate.